

# SmartSand



*The art of sand*

## SmartSand Technology Co. Ltd







# Welcome to Smart Sand Technology Co.

We are a specialist supplier of innovative products to the paving, landscaping, and driveway industries.







## Overview

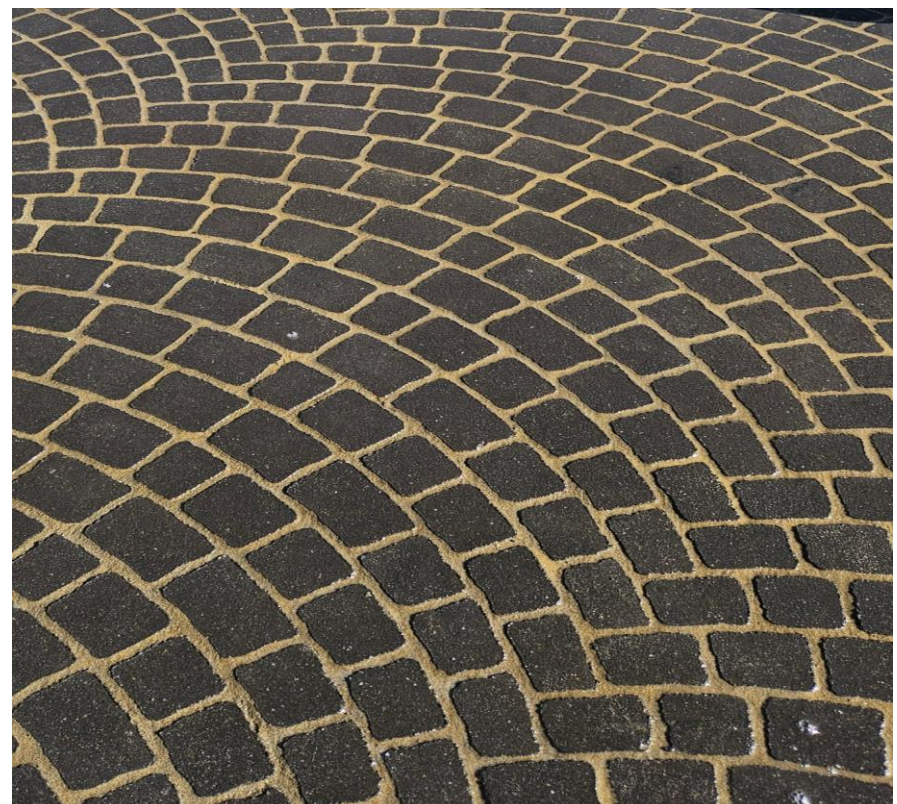
Smart Sand Technology Co. Ltd is a specialized trading company and the sole distributor of DRACO Co. in Saudi Arabia and the GCC region, offering advanced polymeric sand solutions for interlocking joints.

The company was established to keep pace with the surging demand for high-performance construction materials driven by the Kingdom of Saudi Arabia's Vision 2030 and the region's giga-project boom.

Saudi Arabia is undergoing a historic transformation with active construction projects, including NEOM, The Line, Qiddiya, Red Sea Global, Al Muraba, KSP and Diriyah Gate.

These developments are reshaping the nation's infrastructure, tourism, and urban landscapes, creating massive demand for innovative building materials that meet the highest standards of durability, sustainability, and efficiency.

- Smart Sand Technology Co. Ltd is strategically positioned to support these mega-developments by supplying DRACO 250 polymeric sand, a product engineered for the region's climate and construction standards. With its fast-setting, stain-free, and erosion-resistant properties, DRACO 250 is ideal for both pedestrian and traffic-heavy zones, aligning perfectly with the needs of futuristic cities and sustainable infrastructure.







## Vision

To be the most preferred solution partner in the technical polymeric sand industry with our domestic and national identity in the near future.

Smart Sand Technology Co. Ltd is currently working with its partners to localize the production of polymeric sand in Saudi Arabia and transfer the latest manufacturing technologies. This strategic move aims to position the company as a pioneer in the field of polymeric sand production across the region.

## Value

- Being proactive
- Shareholder satisfaction
- Employee satisfaction
- Work safety
- Respect for the environment and people

## Policy

Our main goal is to maximize the interests of our employees, stakeholders, society, and the country.

We integrate quality, environmental, work safety, and security policies into our processes.

We commit to continuous improvement and compliance with national and international laws and standards.

We aim for sustainable excellence and zero defects in customer service, working cooperatively with subcontractors and



## Quality Commitment

We prioritize the personal and professional development of our human resources.

We commit to creating a safe working environment and preventing environmental pollution and work accidents.

We provide ongoing training to internalize occupational health and safety practices.

Management is committed to continuous development and improvement with employee participation.



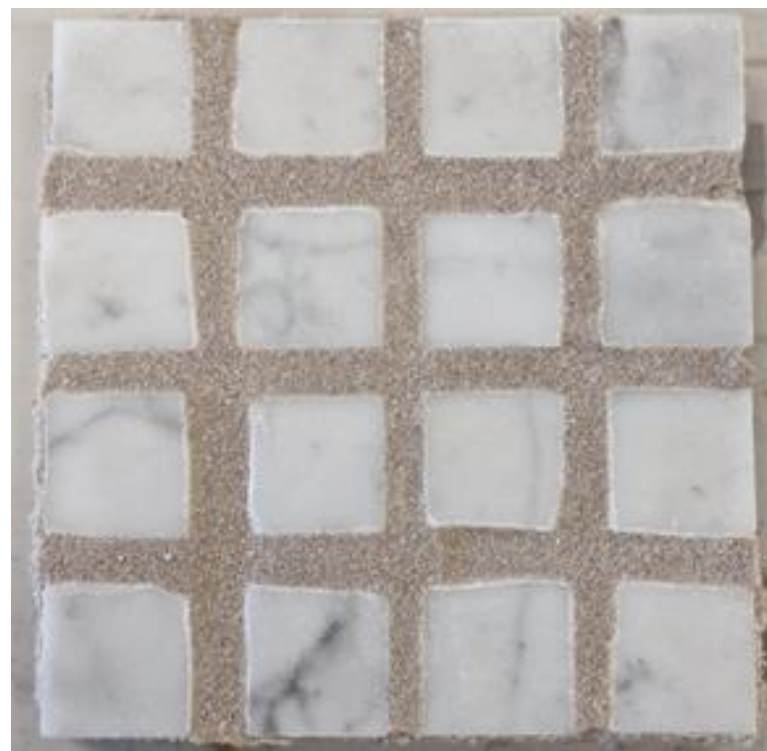
# What is a Polymeric Sand?

**The Polymeric sand is a mix of fine sand and special binders for joint stabilization. It is water repellent and prevents washing out.**

## **Benefits include:**

- Keeps pavers steady
- Stops weeds
- Erosion protection
- Adds durability
- Excellent UV and heat resistance
- Flexibility to inhibit cracking and deterioration

With on-site experience, we understand the challenges and offer excellent products backed by helpful advice and personal service.







## Why Choose DRACO 250 Polymeric Sand?

- The only sand you NEED for your landscape paving
- Save time by just watering
- Ready mix – fast and easy application
- Short setting time
- Leaves no stain
- Ideal for pedestrian and traffic areas
- Resists sudden temperature changes
- Resistance to salt and cleaning acids
- Professional results with consistent color matching and finish







## DRACO GROUT 250

- **DRACO® GROUT 250** is a mixture of quartz sand and powdered polymers
- **Purpose:** Grouting of external pavers for joints from 1 mm to 10 mm wide.



- **Packaging:** 20 kg paper bag

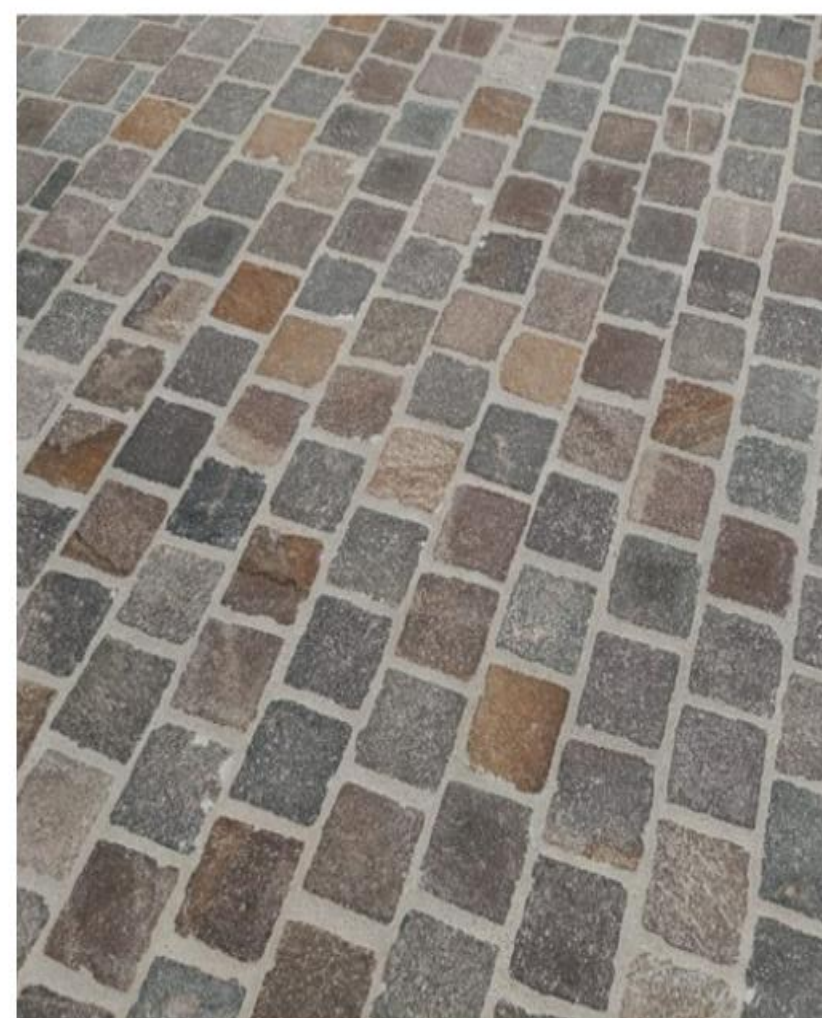


**DRACO®** | MORE THAN WATERPROOF

- After this mixture is moistened, a solid and water-permeable mass is obtained.
- It is suitable for grouting: pedestrian paths, terraces and driveways made of natural stone and concrete on which pedestrian or light car traffic takes place.

### Advantages:

- ❖ Ready-to-use product
- ❖ Slows grass growth
- ❖ Resistant to freeze-thaw cycles
- ❖ No shrinkage after cross-linking



**DRACO®** | MORE THAN WATERPROOF





- It is available as standard in grey and beige
- It can also be produced in other colors on request



## Operating instructions

It takes a minimum of 3 dry days for the material to cross-link after wetting.

The product consists of quartz sand and additives of finer granulation that can fall to the bottom of the package, which is why it is recommended to open the bag, shake it into a bucket or construction trolley and then stir the contents.

The dry product thus mixed is placed on the desired paving and applied to the joints with a broom.

Sweep off any remaining excess material and then blow off the surface of the paving with an air blower

Thoroughly rinse the paving surface with a garden hose nozzle to completely remove fine sand particles

Ensure the material is moistened throughout the full depth of the joints by scratching the joint in one spot; if necessary, moisten the joints further.







- It is available as standard in grey and beige
- It can also be produced in other colors on request



## Operating instructions

It takes a minimum of 3 dry days for the material to cross-link after wetting.

The product consists of quartz sand and additives of finer granulation that can fall to the bottom of the package, which is why it is recommended to open the bag, shake it into a bucket or construction trolley and then stir the contents.

The dry product thus mixed is placed on the desired paving and applied to the joints with a broom.

Sweep off any remaining excess material and then blow off the surface of the paving with an air blower

Thoroughly rinse the paving surface with a garden hose nozzle to completely remove fine sand particles

Ensure the material is moistened throughout the full depth of the joints by scratching the joint in one spot; if necessary, moisten the joints further.







## Consumption

Consumption is defined by the length, width and height of the concrete slab and the width of the joint

Approximate consumption values for pavers with a thickness of 5 cm (kg/m<sup>2</sup>):

Plate Dimension (cm)	DRACO® GROUT 250 (kg/m <sup>2</sup> )			
	The width of the joint(mm)			
	2 mm	3 mm	4 mm	5 mm
20 x 20	1,35	2,00	2,70	3,40
30 x 30	0,9	1,35	1,80	2,25
40 x 40	0,7	1,00	1,35	1,70
50 x 50	0,55	0,80	1,10	1,35
60 x 60	0,45	0,70	0,90	1,15

Formula for calculating consumption:  $[(A + B) / (A \times B)] \times C \times D \times 1,4$

*A = length of the paver mm; B = width of paversu mm; C = thickness of the paver mm; D = joint width in mm*

## Note

- The product does not contain any artificial colorants.
- Appearance is entirely defined by the natural color of the quartz sand.
- Slight shade variations may occur between different production batches



## DRACO GROUT 250 AND

## AREA OF APPLICATION

**DRACO GROUT 250** is a dry polymeric sand—a mixture of quartz sand and polymers—intended for joint-filling (grouting) exterior pavers with joint widths from 1 mm to 10 mm. Once moistened, the mix forms a solid yet water-permeable mass.

**DRACO GROUT 250** is suitable for grouting pedestrian paths, terraces, and driveways made of all kinds of natural stone and concrete that are subject to pedestrian or light vehicular traffic.

Beyond its functional properties, **DRACO GROUT 250** is also a decorative material: in addition to the standard joint colors grey and beige, it can be supplied in other colors as needed. Consumption depends on the length, width, and thickness of the concrete slab/paver and on the joint width itself.



## APPLICATION:

## HOW TO GROUT

Grouting is performed on a well-prepared base that must be sound and free of loose parts. The sub-base must be water-permeable, and the **joints must be cleaned** of soil, grass, and other debris. After opening the package, pour the contents into a dry bucket and **mix thoroughly** so that the quartz sand blends with the fine polymers and additives.

Empty the bucket onto the surface to be grouted and use a brush or broom to **sweep the material into the joints until they are completely filled**. Sweep diagonally to the direction of the joints to remove excess material. It is advisable to **use a vibrating plate** to compact as much material as possible into the joints; then add more material as needed and repeat the process until the joints are fully filled. **Moisten the filled joints** with a garden hose using a gentle spray (a fine mist) so as not to wash the sand out of the joints. The material must be moistened **through the full depth** of the joint. Allow **3 dry days** for the material to fully crosslink/cure. The crosslinked material in the joints will soften when exposed to higher humidity (rain), but after drying it regains its original hardness.



## KEY BENEFITS

### 1— Stabilizes the paving

Although not a structural material but a decorative joint filler, its strength contributes to the overall stability of the pavers.

### 2— Prevents weed growth

The durability of the joint prevents accumulation of fine dirt/soil from which grass would later sprout. It also blocks grass from pushing up from beneath the paving.

### 3— Long-term solution

Once crosslinked, the joint is resistant to weathering—freeze–thaw cycles, heavy rain, wind, etc.

### 4— Water-permeable

In addition to its decorative role, the material is permeable and enables rapid runoff of stormwater, even during heavy precipitation.







**Contact Our  
Expert Team**

**SMARTSAND  
TECHNOLOGY Co. Ltd.**

**Engr. Mazin Khrais  
Country Manager for  
Saudi Arabia & GCC**

**M +966(050)5205365**

**E [info@smartpolymersand.com](mailto:info@smartpolymersand.com)**

**FACEBOOK**

[facebook.com/dracoprocom](https://facebook.com/dracoprocom)

**INSTAGRAM**

[@dracopro](https://www.instagram.com/dracopro)

\*On the cover page:

**DRACO GROUT 250 – 20 kg bag**

**DRACO®**

**THE ART OF SAND**



**HOW TO GROUT  
PAVERS?**